

# Senior Management Structure



**Andrew Barratt**  
Chief Executive &  
Returning Officer

PA to CE



**Anica Goodwin**  
Executive Director  
Organisation  
(Head of Paid Service & Deputy CEO)



**Stefan Garner**  
Executive Director  
Finance (S151)



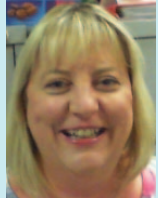
**Rob Barnes**  
Executive Director  
Communities



**Zoe Wolicki**  
Assistant  
Director  
People



**Sarah McGrandle**  
Assistant  
Director  
Ops & Leisure



**Lynne Pugh**  
Assistant  
Director  
Finance



**Tina Mustafa**  
Assistant  
Director  
Neighbourhoods



**Jo Sands**  
Assistant  
Director  
Partnerships



**Paul Weston**  
Assistant  
Director  
Assets



**Matt Bowers**  
Assistant  
Director  
Growth &  
Regeneration

Head of Legal &  
Demo Services  
(Deputy  
Monitoring  
Officer)

ICT  
Customer Services  
HR/OD  
PR/Comms  
Marketing  
Customer  
Insight/Info Mgt  
Performance  
Payroll  
Ombudsman

StreetScene  
Arts & Events  
H&S (ext)  
Community  
Leisure  
Business Support  
Caretaking  
Cleaning (inc HRA)  
Markets  
Environmental  
Management

Revenues  
Benefits  
Finance  
Procurement  
Corporate Risk  
Management

Landlord Services  
Tenant  
Participation  
/Sustainment  
Housing solutions  
Homelessness  
Emergency  
Planning  
CCTV  
Street Wardens  
Corp ASB  
Business Support

Community Safety  
Partnership  
Safeguarding  
Voluntary Sector  
Partnerships/TSP  
Private Sector  
Housing  
Strategic Housing  
Enforcement  
Business Support

Property Mgt  
Investment  
Repairs  
DFGs  
Commercial  
property portfolio  
Asset/facilities  
management  
Business  
Continuity

Planning  
Environmental  
Health  
Business  
Development  
Tourism  
Investment  
Heritage (inc  
Castle)

Head of Audit  
and  
Governance  
Manager  
(Monitoring  
Officer &  
Deputy  
Returning  
Officer)

Elections  
Audit